



Worktops & Undercounters

REFRIGERATORS & FREEZERS



Continental[®]
Refrigerator

INNOVATIVE DESIGNS FOR YOUR FOODSERVICE NEEDS

Worktops & Undercounters

Refrigerators & Freezers

Worktop & Undercounter models have stainless steel fronts, tops and end panels with aluminum backs and interiors. Worktop models are available as a flat top or with a 5 1/2" backsplash. Undercounters come standard front breathing.

Performance & Reliability

Performance-run tested for a minimum of 12 hours providing a highly sophisticated temperature analysis recording, exclusive to each cabinet.



FLEXIBILITY

Modifications Made Easy.

At Continental Refrigerator, we know the foodservice industry is an ever-changing environment. We are reminded of this every day through feedback from our customers, both directly and through our network of representatives. In fact, customer feedback has often lead to our custom engineering modifications becoming standard product features.

For this reason, we pride ourselves in delivering feature-rich refrigeration equipment solutions designed specifically for the commercial foodservice market. Whether it's kitchen ambient, food safety, limited space or storage challenges, our products are packed with flexible options that provide **real** operator benefits out of the box. This flexibility, a key differentiator of our products, enables our customers to modify base product features strategic to the way they operate their kitchen or bar environment.

Shown: SW60N



Consult factory for other modifications

www.continentalrefrigerator.com

Worktops & Undercounters offer a host of options that can help you modify these units to your operation. Popular options include:

2-Tier Drawers

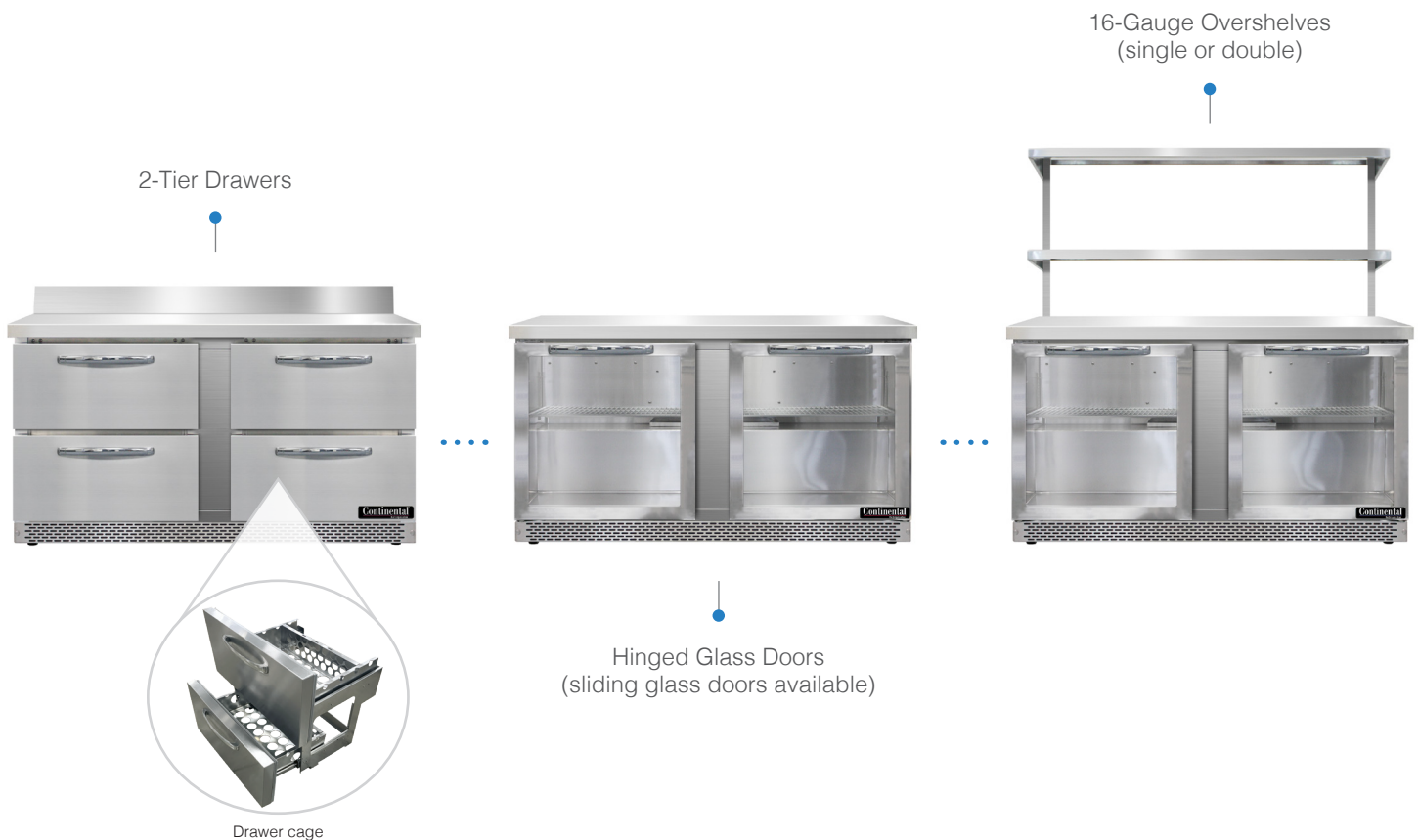
With easy in-the-field conversion from “door to drawer” or “drawer to door”

Overshelves

16-gauge stainless steel, single or double for added storage

Front Breathing

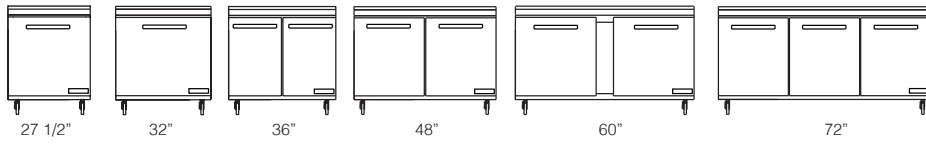
A unique, field assembled, bottom-mounted ventilation system designed to allow cabinets to be flush against a wall or built into a counter to conserve space (intake/exhaust from the front)



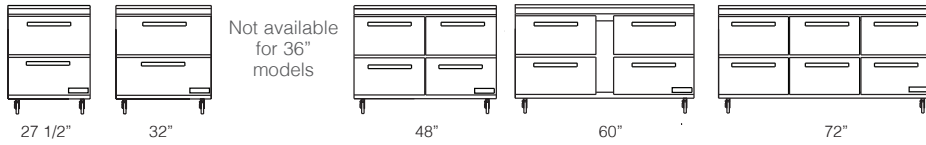
Call us toll free at (800) 523-7138

Overview of Models & Standard Features

Door Configurations by Widths (shown with casters)

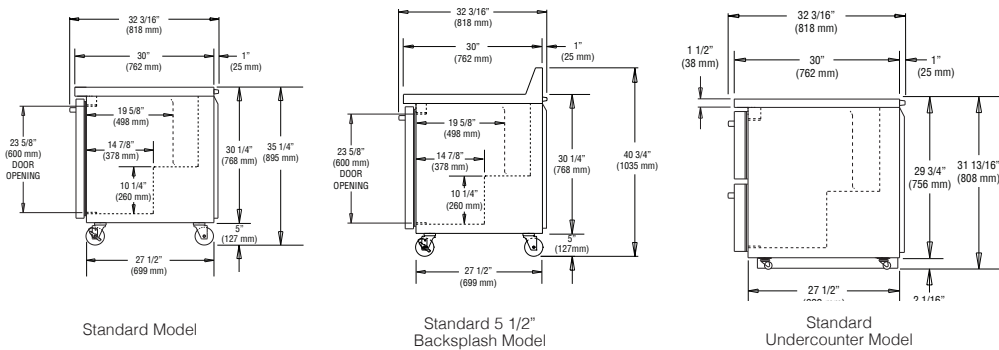


Two-Tier Drawer Configurations by Widths (two-tier drawers are standard on -D models)



Note: Front breathing models (not shown), have the same door/drawer configuration.

Side View (Door and drawer models are the same depth)



Drawer Pan Configurations

MODELS	TWO TIER DRAWERS
27"/60"	(1) 12 x 20 x 6 pan per drawer
32"	(1) 12 x 20 x 6 pan per drawer or (1) 1/2 size x 6 & (2) 1/3 size x 6 pans per drawer
48"/72"	(1) 1/2 size x 6 & (1) 1/3 size x 6 pan per drawer

Note: Tops of Undercounter models are not designed to be worked on.

Standard Features

Performance-rated refrigeration system

Environmentally-safe R-290 refrigerant

2" non-CFC polyurethane foam insulation

Smooth, polished chrome door/drawer handles

Stainless steel front, top and end panels, aluminum back and interior

Spring loaded, self closing doors

Magnetic snap-in door gaskets

Heavy duty, epoxy-coated steel shelves

Automatic, hot gas condensate evaporator

Non-corrosive, plasticized fin evaporator coil

Easily serviceable, back-mounted compressor

Electronic controller w/ digital display & hi-low alarm

Completely enclosed, vented and removable case back

LED interior lighting (-GD & -SGD refrigerator models only)

Field rehingable doors (solid doors only)

Automatic electric defrost (freezers)

5" casters (standard models)

3 3/4" casters (front breathing models)

1 3/8" diameter plate casters (Undercounter models) (factory installed, cannot be modified)

2" high, bottom mounted front breather air divider (Undercounter models)

Specifications - Refrigerators & Freezers (0°F)

Standard Worktop Refrigerators

SIZE	WITH DOOR(S)	WITH DRAWERS	EXTERIOR DIMENSIONS INCHES W x D x H	CAPACITY BTU/HR*	H.P.	SHIP WEIGHT
27"	SW27N	SW27N-D	27 1/2 x 32 3/16 x 35 1/4	1625	1/5	165
32"	SW32N	SW32N-D	32 x 32 3/16 x 35 1/4	1625	1/5	221
36"	SW36N	not available	36 x 32 3/16 x 35 1/4	1625	1/5	239
48"	SW48N	SW48N-D	48 x 32 3/16 x 35 1/4	1625	1/5	248
60"	SW60N	SW60N-D	60 x 32 3/16 x 35 1/4	1625	1/5	284
72"	SW72N	SW72N-D	72 x 32 3/16 x 35 1/4	1625	1/5	318

Worktop Refrigerators w/ 5 1/2" Backsplash

27"	SW27NBS	SW27NBS-D	27 1/2 x 32 3/16 x 40 3/4	1625	1/5	170
32"	SW32NBS	SW32NBS-D	32 x 32 3/16 x 40 3/4	1625	1/5	221
36"	SW36NBS	not available	36 x 32 3/16 x 40 3/4	1625	1/5	239
48"	SW48NBS	SW48NBS-D	48 x 32 3/16 x 40 3/4	1625	1/5	258
60"	SW60NBS	SW60NBS-D	60 x 32 3/16 x 40 3/4	1625	1/5	297
72"	SW72NBS	SW72NBS-D	72 x 32 3/16 x 40 3/4	1625	1/5	334

Display Worktop Refrigerators

SIZE	W/ HINGED GLASS DOOR(S)	W/ SLIDING GLASS DOOR(S)	EXTERIOR DIMENSIONS INCHES W x D x H	CAPACITY BTU/HR*	H.P.	SHIP WEIGHT
27"	SW27NGD	not available	27 1/2 x 31 7/16 x 35 1/4	1625	1/5	180
32"	SW32NGD	not available	32 x 31 7/16 x 35 1/4	1625	1/5	235
36"	SW36NGD	not available	36 x 31 7/16 x 35 1/4	1625	1/5	255
48"	SW48NGD	-	48 x 31 7/16 x 35 1/4	1625	1/5	265
	-	SW48NSGD	48 x 31 x 35 1/4	2073	1/4+	265
60"	SW60NGD	-	60 x 31 7/16 x 35 1/4	1625	1/5	300
	-	SW60NSGD	60 x 31 x 35 1/4	2073	1/4+	300
72"	SW72NGD	-	72 x 31 7/16 x 35 1/4	1625	1/5	385
	-	SW72NSGD	72 x 31 x 35 1/4	2073	1/4+	385

Standard Worktop Freezers

SIZE	WITH DOOR(S)	WITH DRAWERS	EXTERIOR DIMENSIONS INCHES W x D x H	CAPACITY BTU/HR*	H.P.	SHIP WEIGHT
27"	SWF27N	SWF27N-D	27 1/2 x 32 3/16 x 35 1/4	1572	1/4	165
32"	SWF32N	SWF32N-D	32 x 32 3/16 x 35 1/4	1800	1/3	221
36"	SWF36N	not available	36 x 32 3/16 x 35 1/4	1800	1/3	239
48"	SWF48N	SWF48N-D	48 x 32 3/16 x 35 1/4	2078	1/2	248
60"	SWF60N	SWF60N-D	60 x 32 3/16 x 35 1/4	2078	1/2	284

Worktop Freezers w/ 5 1/2" Backsplash

27"	SWF27-BS	SWF27NBS-D	27 1/2 x 32 3/16 x 40 3/4	1572	1/4	170
32"	SWF32-BS	SWF32NBS-D	32 x 32 3/16 x 40 3/4	1800	1/3	221
36"	SWF36-BS	not available	36 x 32 3/16 x 40 3/4	1800	1/3	239
48"	SWF48-BS	SWF48NBS-D	48 x 32 3/16 x 40 3/4	2078	1/2	258
60"	SWF60-BS	SWF60NBS-D	60 x 32 3/16 x 40 3/4	2078	1/2	297

Display Worktop Freezers

SIZE	W/ HINGED GLASS DOOR(S)	W/ SLIDING GLASS DOOR(S)	EXTERIOR DIMENSIONS INCHES W x D x H	CAPACITY BTU/HR*	H.P.	SHIP WEIGHT
27"	SWF27NGD	not available	27 1/2 x 31 7/16 x 35 1/4	1572	1/4	180

*BTU/HR Rating @ +25°F, 90°F ambient (Refrigerators)

*BTU/HR Rating @ -15°F, 90°F ambient (Freezers)

10 ft. cord and plug attached (115-60-1 volts)

Specifications - Front Breathing Refrigerators & Freezers (0°F)

Standard Worktop Refrigerators

SIZE	WITH DOOR(S)	WITH DRAWERS	EXTERIOR DIMENSIONS INCHES W x D x H	CAPACITY BTU/HR*	H.P.	SHIP WEIGHT
27"	SW27N-FB	SW27N-FB-D	27 1/2 x 32 3/16 x 34	1625	1/5	165
32"	SW32N-FB	SW32N-FB-D	32 x 32 3/16 x 34	1625	1/5	221
36"	SW36N-FB	not available	36 x 32 3/16 x 34	1625	1/5	239
48"	SW48N-FB	SW48N-FB-D	48 x 32 3/16 x 34	1625	1/5	248
60"	SW60N-FB	SW60N-FB-D	60 x 32 3/16 x 34	1625	1/5	284
72"	SW72N-FB	SW72N-FB-D	72 x 32 3/16 x 34	1625	1/5	318

Worktop Refrigerators w/ 5 1/2" Backsplash

27"	SW27NBS-FB	SW27NBS-FB-D	27 1/2 x 32 3/16 x 39 1/2	1625	1/5	170
32"	SW32NBS-FB	SW32NBS-FB-D	32 x 32 3/16 x 39 1/2	1625	1/5	221
36"	SW36NBS-FB	not available	36 x 32 3/16 x 39 1/2	1625	1/5	239
48"	SW48NBS-FB	SW48NBS-FB-D	48 x 32 3/16 x 39 1/2	1625	1/5	258
60"	SW60NBS-FB	SW60NBS-FB-D	60 x 32 3/16 x 39 1/2	1625	1/5	297
72"	SW72NBS-FB	SW72NBS-FB-D	72 x 32 3/16 x 39 1/2	1625	1/5	334

Display Worktop Refrigerators

SIZE	W/ HINGED GLASS DOOR(S)	W/ SLIDING GLASS DOOR(S)	EXTERIOR DIMENSIONS INCHES W x D x H	CAPACITY BTU/HR*	H.P.	SHIP WEIGHT
27"	SW27NGD-FB	not available	27 1/2 x 31 7/16 x 35 1/4	1625	1/5	180
32"	SW32NGD-FB	not available	32 x 31 7/16 x 35 1/4	1625	1/5	235
36"	SW36NGD-FB	not available	36 x 31 7/16 x 35 1/4	1625	1/5	255
48"	SW48NGD-FB	-	48 x 31 7/16 x 35 1/4	1625	1/5	265
	-	SW48NSGD-FB	48 x 31 x 35 1/4	2073	1/4+	265
60"	SW60NGD-FB	-	60 x 31 7/16 x 35 1/4	1625	1/5	300
	-	SW60NSGD-FB	60 x 31 x 35 1/4	2073	1/4+	300
72"	SW72NGD-FB	-	72 x 31 7/16 x 35 1/4	1625	1/5	385
	-	SW72NSGD-FB	72 x 31 x 35 1/4	2073	1/4+	385

Standard Worktop Freezers

SIZE	WITH DOOR(S)	WITH DRAWERS	EXTERIOR DIMENSIONS INCHES W x D x H	CAPACITY BTU/HR*	H.P.	SHIP WEIGHT
27"	SWF27N-FB	SWF27N-FB-D	27 1/2 x 32 3/16 x 34	1572	1/4	165
32"	SWF32N-FB	SWF32N-FB-D	32 x 32 3/16 x 34	1800	1/3	221
36"	SWF36N-FB	not available	36 x 32 3/16 x 34	1800	1/3	239
48"	SWF48N-FB	SWF48N-FB-D	48 x 32 3/16 x 34	2078	1/2	248
60"	SWF60N-FB	SWF60N-FB-D	60 x 32 3/16 x 34	2078	1/2	284

Worktop Freezers w/ 5 1/2" Backsplash

27"	SWF27NBS-FB	SWF27NBS-FB-D	27 1/2 x 32 3/16 x 39 1/2	1572	1/4	170
32"	SWF32NBS-FB	SWF32NBS-FB-D	32 x 32 3/16 x 39 1/2	1800	1/3	221
36"	SWF36NBS-FB	not available	36 x 32 3/16 x 39 1/2	1800	1/3	239
48"	SWF48NBS-FB	SWF48NBS-FB-D	48 x 32 3/16 x 39 1/2	2078	1/2	258
60"	SWF60NBS-FB	SWF60NBS-FB-D	60 x 32 3/16 x 39 1/2	2078	1/2	297

Display Worktop Freezers

SIZE	W/ HINGED GLASS DOOR(S)	W/ SLIDING GLASS DOOR(S)	EXTERIOR DIMENSIONS INCHES W x D x H	CAPACITY BTU/HR*	H.P.	SHIP WEIGHT
27"	SWF27NGD-FB	not available	27 1/2 x 31 7/16 x 34	1572	1/4	180

*BTU/HR Rating @ +25°F, 90°F ambient (Refrigerators)

*BTU/HR Rating @ -15°F, 90°F ambient (Freezers)

10 ft. cord and plug attached (115-60-1 volts)

Specifications - Undercounter Refrigerators & Freezers (0°F)

Undercounter Refrigerators

SIZE	WITH DOOR(S)	WITH DRAWERS	EXTERIOR DIMENSIONS INCHES W x D x H	CAPACITY BTU/HR*	H.P.	SHIP WEIGHT
27"	SW27N-U	SW27N-U-D	27 1/2 x 32 3/16 x 31 13/16	1625	1/5	165
32"	SW32N-U	SW32N-U-D	32 x 32 3/16 x 31 13/16	1625	1/5	221
36"	SW36N-U	not available	36 x 32 3/16 x 31 13/16	1625	1/5	239
48"	SW48N-U	SW48N-U-D	48 x 32 3/16 x 31 13/16	1625	1/5	248
60"	SW60N-U	SW60N-U-D	60 x 32 3/16 x 31 13/16	1625	1/5	284
72"	SW72N-U	SW72N-U-D	72 x 32 3/16 x 31 13/16	1625	1/5	318

Undercounter Freezers

27"	SWF27N-U	SWF27N-U-D	27 1/2 x 32 3/16 x 31 13/16	1572	1/4	165
32"	SWF32N-U	SWF32N-U-D	32 x 32 3/16 x 31 13/16	1800	1/3	221
36"	SWF36N-U	not available	36 x 32 3/16 x 31 13/16	1800	1/3	239
48"	SWF48N-U	SWF48N-U-D	48 x 32 3/16 x 31 13/16	2078	1/2	248
60"	SWF60N-U	SWF60N-U-D	60 x 32 3/16 x 31 13/16	2078	1/2	284

Display Undercounter Refrigerators

SIZE	W/ HINGED GLASS DOOR(S)	W/ SLIDING GLASS DOOR(S)	EXTERIOR DIMENSIONS INCHES W x D x H	CAPACITY BTU/HR*	H.P.	SHIP WEIGHT
27"	SW27NGD-U	not available	27 1/2 x 31 7/16 x 31 13/16	1625	1/5	180
32"	SW32NGD-U	not available	32 x 31 7/16 x 31 13/16	1625	1/5	235
36"	SW36NGD-U	not available	36 x 31 7/16 x 31 13/16	1625	1/5	255
48"	SW48NGD-U	-	48 x 31 7/16 x 31 13/16	1625	1/5	265
	-	SW48NSGD-U	48 x 31 x 31 13/16	2073	1/4+	265
60"	SW60NGD-U	-	60 x 31 7/16 x 31 13/16	1625	1/5	300
	-	SW60NSGD-U	60 x 31 x 31 13/16	2073	1/4+	300
72"	SW72NGD-U	-	72 x 31 7/16 x 31 13/16	1625	1/5	385
	-	SW72NSGD-U	72 x 31 x 31 13/16	2073	1/4+	385

Display Undercounter Freezers

SIZE	W/ HINGED GLASS DOOR(S)	W/ SLIDING GLASS DOOR(S)	EXTERIOR DIMENSIONS INCHES W x D x H	CAPACITY BTU/HR*	H.P.	SHIP WEIGHT
27"	SWF27NGD-U	not available	27 1/2 x 31 7/16 x 31 13/16	1572	1/4	180

*BTU/HR Rating @ +25°F, 90°F ambient (Refrigerators)

*BTU/HR Rating @ -15°F, 90°F ambient (Freezers)
10 ft. cord and plug attached (115-60-1 volts)

- Door/drawer locks
- Overshelves
- Stainless steel shelves
- Adjustable legs (not available on Undercounter models)
- Stainless steel interior
- Expansion valve system (48"-72" solid & HGD refrigerators only)
- Stacking collar (27" refrigerator models only)
- Stainless steel back



Door lock



Adjustable legs



Overshelves

Engineering, Manufacturing & Quality Control

Continental Refrigerator engineers and builds our Worktops & Undercounters to meet the most stringent specifications demanded by consultants and service operators. All cabinets are constructed of top quality materials and components, attributing to their genuine ruggedness and durability. Our Worktops & Undercounters are designed with enhancements to endure everyday use in harsh commercial kitchen environments.

Prior to factory shipping, all models are performance-run tested for a minimum of 12 hours, providing a highly sophisticated temperature analysis recording, exclusive to each individual cabinet. This recording is then supplied, along with the operation manual, for the customer. A final leak test, vibration check, noise level and visual examination is made by our quality control team, to assure a superior product is shipped from our factory.

Front Breathing

Front breathing option is a unique field-assembled, bottom mounted ventilation system designed to allow cabinets to be flush against a wall or built into a counter to conserve space.

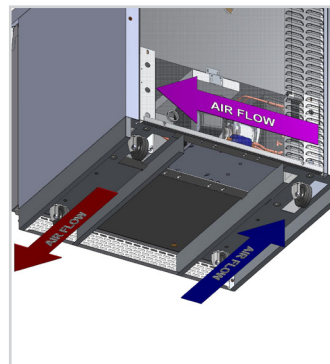


Diagram of front breathing air flow

Product design and specifications are subject to change without prior notice.

How to Buy

LOCAL SALES REPRESENTATIVES			STATES COVERED
Wyllie Marketing	Weymouth, MA	(781) 340-6157	ME, RI, NH, MA, VT, CT
Link 2 Hospitality Solutions	Rochester, NY	(585) 254-1780	Upstate NY
C.R. Peterson Associates	Avon, MA	(800) 257-4040	N. NJ, New York City
Schmid Dewland & Associates	Marlton, NJ	(856) 783-3400	E. PA, DE, S. & Central NJ
Link 2 Hospitality Solutions	Bridgeville, PA	(412) 341-2020	W. PA, W. VA (except Panhandle)
High Sabatino Associates, Inc.	Jessup, MD	(301) 470-7051	DC, MD, VA, W. VA (Panhandle)
Stiefel Associates, Inc.	Lansing, MI	(517) 393-3019	MI (except Upper Peninsula)
Alliance Foodservice Equipment	Pickerington, OH	(800) 833-0797	OH, KY
Stiefel Associates, Inc.	Edinburgh, IN	(800) 832-6442	IN
Jay Mark Group, LTD	Elk Grove Village, IL	(847) 545-1918	N. IL
North Star Agency	Minneapolis, MN	(763) 545-1400	MN, ND, SD
Mirkovich & Associates	Waukesha, WI	(630) 792-0080	WI, MI (Upper Peninsula)
Select Marketing	St. Louis, MO	(314) 961-3332	MO, KS, IA, NE, S. IL
Premier Foodservice Group	Norcross, GA	(877) 667-2192	NC, SC
Pro-Quip Foodservice	Little Rock, AR	(501) 221-7120	AR, LA, MS, W. TN (W. of Tenn. River)
The Veitch Group	Ft. Lauderdale, FL	(954) 316-6162	FL (except Panhandle)
Merkolat	Pembroke Pines, FL	(864) 248-6260	Latin America, Caribbean
Premier Foodservice Group	Norcross, GA	(877) 667-2192	AI, FL (Panhandle), GA, E. TN (E. of Tenn River)
Desert Peak Marketing	Denver, CO	(303) 790-2424	CO, S. ID, MT, UT WY
Roller & Associates	Seattle, WA	(206) 547-3555	WA, OR, AK, N. ID
Foodservice Equipment Agents	Placentia, CA	(714) 693-3329	AZ (Bull Head City), S. CA, S. NV
Inform Foodservice Solutions	Walnut Creek, CA	(800) 655-7756	N. CA, N. NV
EMC Hospitality	Kealahou, HI	(808) 315-2077	HI
Desert Peak Marketing	Phoenix, AZ	(602) 255-0976	AZ (except Bull Head City), NM, TX (El Paso)
Forbes Hever & Wallace, Inc.	Coppell, TX	(972) 219-8898	OK, TX (except El Paso)



A Division of National Refrigeration & Air Conditioning Products

Continental Refrigerator | Local: (215) 244-1400
539 Dunksferry Road | Toll Free: (800) 523-7138
Bensalem, PA 19020 | Fax: (215) 244-9579

www.continentalrefrigerator.com

Continental[®]

Refrigerator

INNOVATIVE DESIGNS FOR YOUR FOODSERVICE NEEDS



PROUDLY
DESIGNED & ASSEMBLED
IN THE U.S.A.